

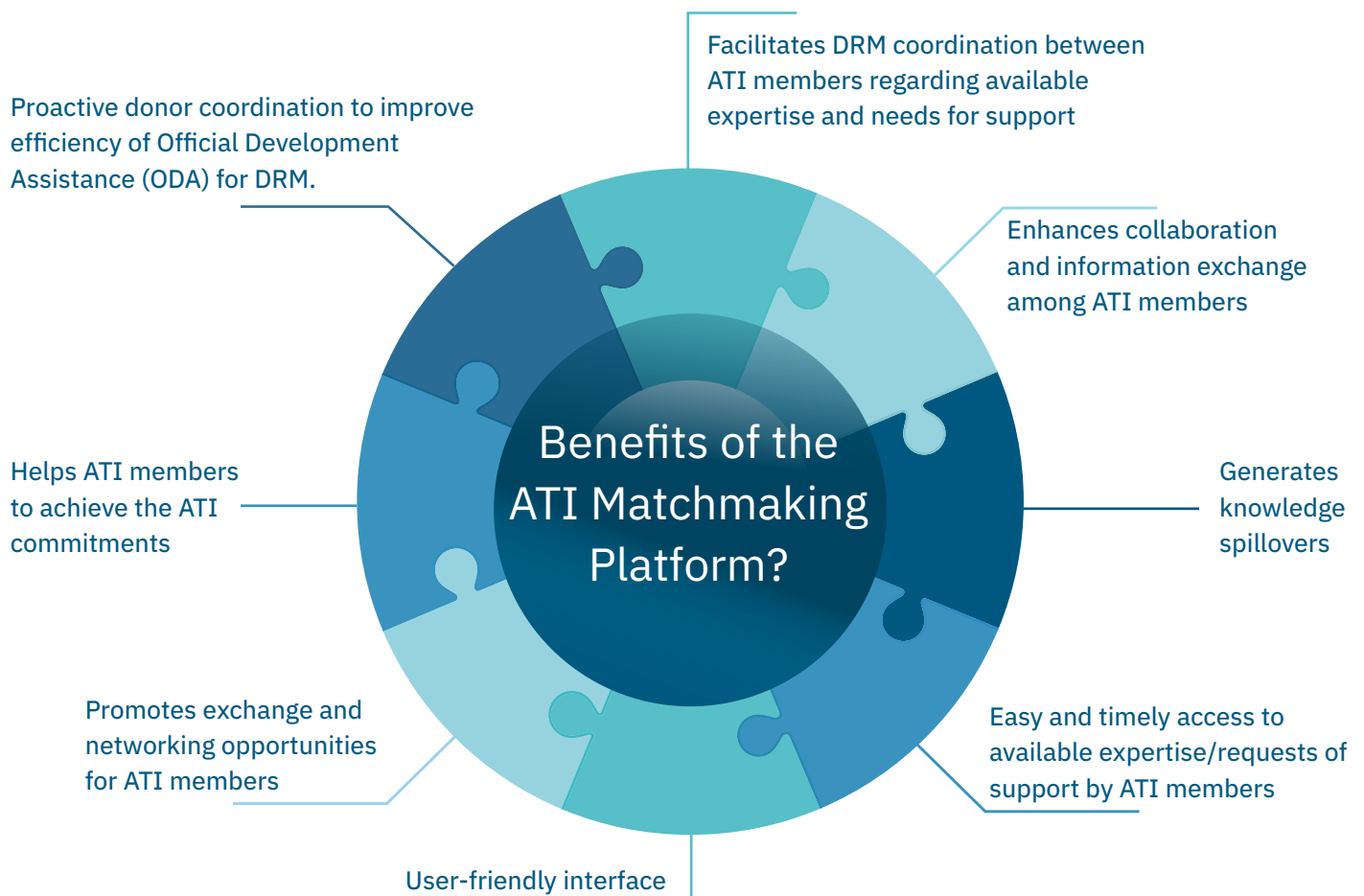
The ATI Matchmaking Platform



What is the ATI Matchmaking Platform?

The ATI Matchmaking Platform is an online mechanism that aims to support domestic revenue mobilisation (DRM) collaboration between the members of the Addis Tax Initiative (ATI). It enables countries and organisations to search out and contact each other based on the need for support or the availability of relevant expertise. As such, the ATI Matchmaking Platform is a tool to support ATI members in the implementation of the [ATI Declaration 2025](#).

The ATI Matchmaking Platform serves as a space for **matching existing needs and availabilities of DRM resources, expertise and finance**. The platform provides ATI members with initial information on existing needs for support and availability of relevant expertise within the ATI network. Through the integrated messaging function, interested parties can contact each other directly. Requested and announced assistance can take many shapes, such as technical assistance, expert support, study visits, training and financial assistance. ATI partner countries are able to post requests for DRM support, whereby development partners can inform others about available expertise related to DRM. Supporting organisations are able to post both, requests for support and to announce available expertise. The tool is exclusively accessible for ATI members that have registered to the platform. Organisations closely associated with an ATI member country can also register to the platform.*



* All negotiations to implement announcements of available expertise/requests for support must be conducted bilaterally between the interested parties. The International Tax Compact (ITC) in its capacity as ATI Secretariat only facilitates the exchange of ATI members via the ATI Matchmaking Platform. The ITC does not provide any funding and cannot guarantee that the submitted announcements of available expertise/requests for support receive a response.



5 steps to use the ATI Matchmaking Platform

1. Create an account by sending an informal email to secretariat@taxcompact.net.
2. Confirm your registration.
3. Once your account is set up, you can log into your personal [dashboard](#).
4. Fill in a “[Request for support](#)” or “[Announcement of available expertise](#)”.
5. Respond to already posted “Requests for supports” or/and “Announcements of available expertise”.

For more information on the ATI Matchmaking Platform, please refer to our [FAQs](#) and the [ATI Matchmaking User Guide](#) or contact secretariat@taxcompact.net.

Funded by



Facilitated by

